

TrueNAS® Fleet Management

TrueCommand is a ZFS-aware management platform that empowers administrators with monitoring, configuration, service control, and reporting for their fleets of TrueNAS systems, all from one place.

Consolidated Monitoring and Reporting

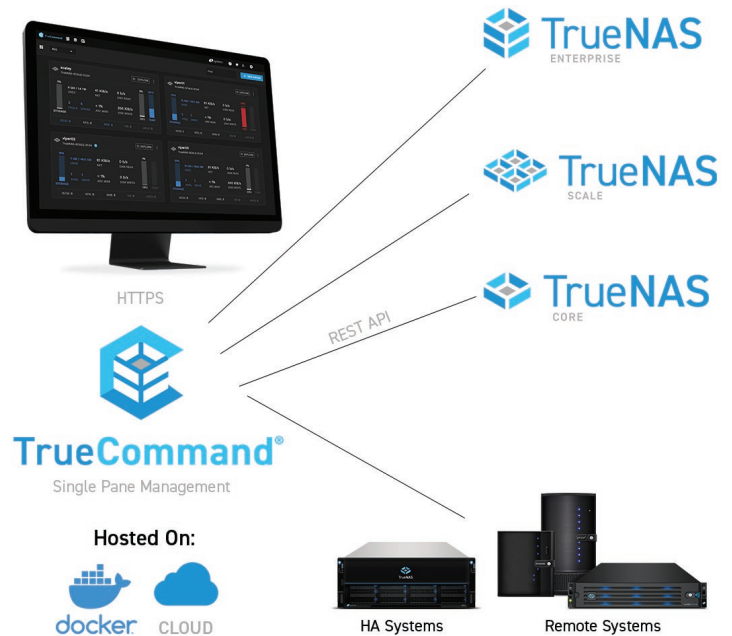
Admins can view the status of multiple systems simultaneously and drill down into the specifics for nearly any metric. Disk performance, network latency, CPU/memory/cache usage, and other system stats are shown at a glance so bottlenecks can be dealt with efficiently. Your organization can easily track everything from drives to services on your NAS systems.

Rapidly Manage and Diagnose Faults

TrueCommand proactively collects, prioritizes, and sends alerts to immediately highlight events. Alerts are customizable and multivariable. Receive alerts directly in the web interface or by email for system problems, drive problems, service restarts, and more.

Centralize Storage Control and Audits

Dedicated users and teams can group, manage, and easily log into their TrueNAS systems. No more memorizing IPs or passwords; all systems are just a click away. Reports, alerts, and audits are simplified with a central database that can persist for up to two years. Control individual services directly from the TrueCommand web interface itself. Security and administrative processes can be enforced with Role Based Access Control (RBAC).



ZFS Awareness Simplifies Operations

TrueCommand is ZFS-aware. Administrators can set custom alerts on statistics like ARC usage or pool capacity to help ensure storage uptime and future planning. TrueCommand identifies and pinpoints impaired drives or vdevs (RAID groups), saving valuable time to resolution.

Maximize Uptime with Predictive Analytics

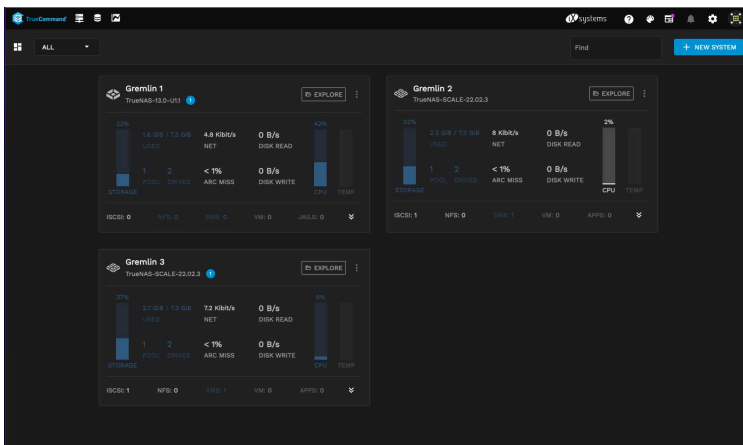
TrueCommand brings intelligence to TrueNAS infrastructure through predictive analysis. TrueCommand can predict when storage pools will reach capacity limits and when drives have problems. Performance analytics help admins diagnose problems and react quickly to meet operational targets and keep storage systems online.

Deploy Where Needed

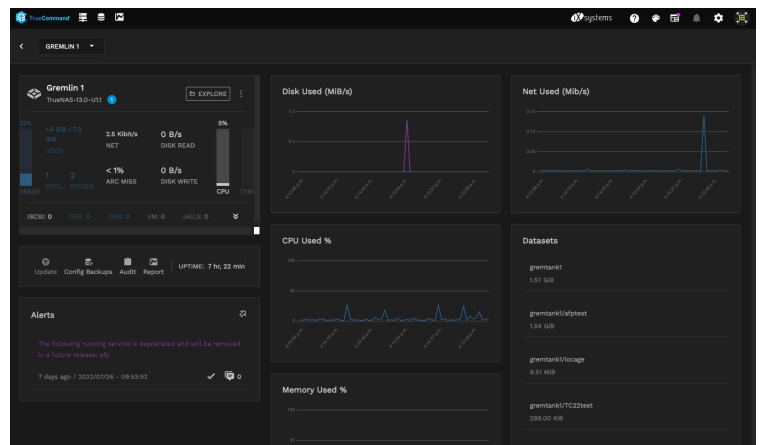
TrueCommand can run as a Docker instance, or on a small physical system on the network. It is also available as a SaaS offering, TrueCommand Cloud.

ZFS Features Monitored	Reporting	Alerts	Role-Based Access Control (RBAC)
<ul style="list-style-type: none"> • Pools, VDevs, RAID-Z • Cache (ARC, LZARC, SLOG) • Resilvering, Scrubbing 	<ul style="list-style-type: none"> • System info (name, hostname/IP address, release, uptime, boot, device) • CPU (number, utilization) • Disks (status, throughput, IOPS, latency) • Jails (granular monitoring per Jail/Plugin) • Memory (activity, cache usage) • Network (throughput, packets, status) • Services (enabled, ID, status) • Storage Status (pools, vdevs, encryption) 	<ul style="list-style-type: none"> • In the web interface • Email to users/teams 	<ul style="list-style-type: none"> • Single sign-on • Define teams and groups • Audit device history and changes • Read-only views for users
REST and Websocket APIs	Compatible TrueNAS Versions	Web Interface	Recommended System Requirements
<ul style="list-style-type: none"> • Real-time monitoring of TrueNAS systems • Collect performance statistics • Enable, disable, start, and stop services • Configure Gluster and Clustered SMB • Configure and monitor TrueCommand 	<ul style="list-style-type: none"> • Release 12.0 or TrueNAS 13.0 • TrueNAS SCALE (all versions) 	<ul style="list-style-type: none"> • Angular web interface • HTML5 browsers • Chrome, Firefox, Edge, Safari 	<ul style="list-style-type: none"> • Physical • 4 GB RAM • 80 GB storage • Network access to TrueNAS system

Screenshots



Multi-Systems Monitoring



System Status and Alerts

User Dashboard

truecommand-sales@ixsystems.com